

1147412205

Switch-off valve



Bosch solenoid valves are a reliable choice for controlling coolant flows in a variety of applications. Their robust design and flow-optimized design ensure consistent performance and reliability, even under the most demanding conditions.

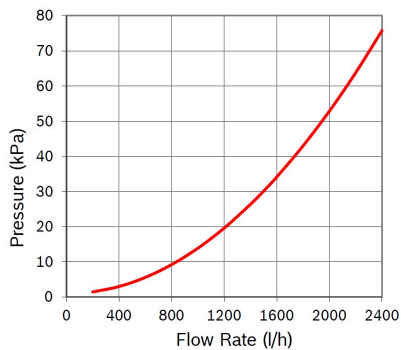
The coolant switch-off valve SNR 1147412205 operates with a nominal voltage of 24V and has opposing inlets and outlets.

[Contact us!](#)



Product Specification

Technical data and performance curve



Nominal Voltage (V): 24

Pressure drop (kPa): 35

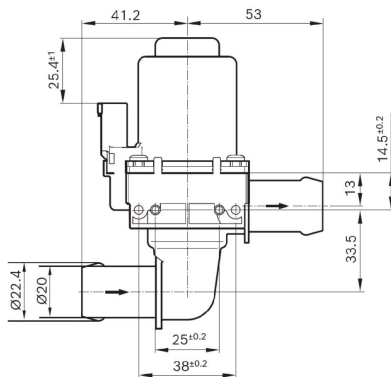
Flow rate (l/h): 1500

Switchable Pressure difference (kPa): 150

Resistance (Ω): 48



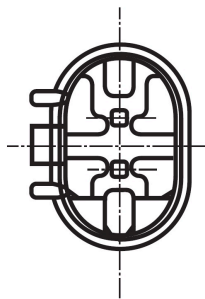
Dimensions



Please contact us if you need a 3d model

[Contact](#)

Connector



Housing:

1-967644-1

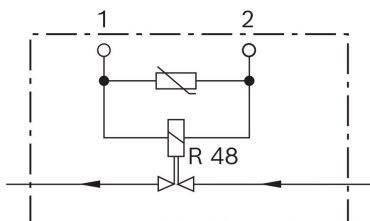
Contact:

5-965906-6

Single wire seal:

0-967067-1

Wiring diagram



Resistance (Ω)

48

Öffnungsrichtung

stromlos geöffnet



Downloads

You may also be interested in:

To Product family: [Catalogue](#)

