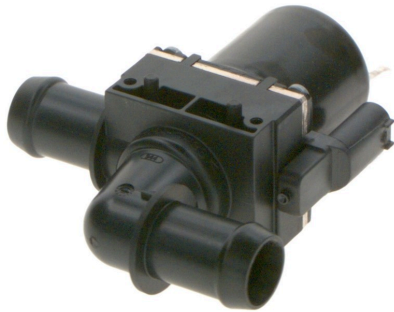


1147412208

# Switch-off valve



Thanks to decades of experience in heat, fluid and energy management, Bosch offers excellent solenoid valves for controlling coolant flow in heating and cooling applications. The robust design of the valves and their flow-optimized design ensure consistent performance and reliability, even under harsh conditions.

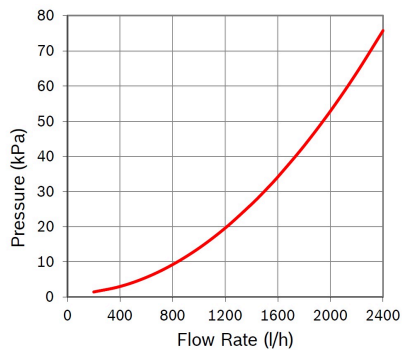
The 12 Volt switch-off valve, SNR 1147412208, is manufactured according to stringent automotive quality guidelines and has opposing inlets and outlets.

[Contact us!](#)



## Product Specification

### Technical data and performance curve



**Nominal Voltage (V):** 12

**Pressure drop (kPa):** 35

**Flow rate (l/h):** 1500

**Switchable Pressure difference (kPa):** 150

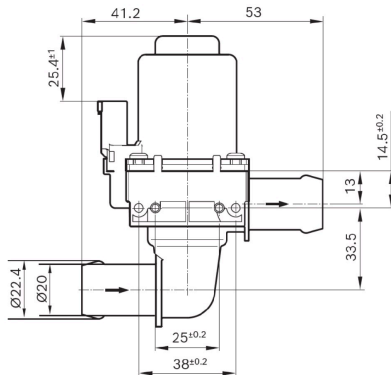
**Resistance ( $\Omega$ ):** 12,4

Product images and pictures are for demonstration purposes only, the actual product may differ from the picture shown. The quotation drawing is binding.

Robert Bosch GmbH, Auf der Breit 4, 76227 Karlsruhe, Germany [www.bosch-ibusiness.com](http://www.bosch-ibusiness.com)



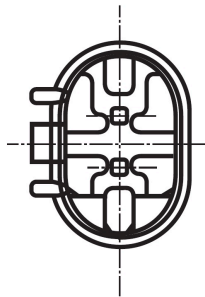
## Dimensions



Please contact us if you need a 3d model

[Contact](#)

## Connector



### Housing:

1-967644-1

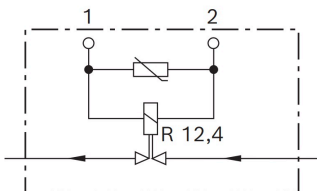
### Contact:

5-965906-6

### Single wire seal:

0-967067-1

## Wiring diagram



### Resistance ( $\Omega$ )

12,4

### Öffnungsrichtung

stromlos geöffnet



---

## Downloads

You may also be interested in:

To Product family: [Catalogue](#)

