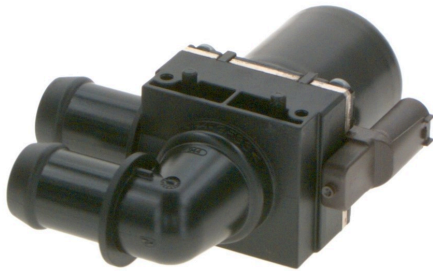


1147412218

Switch-off valve



Complying with the high-quality requirements of the automotive industry and with decades of experience in heat, fluid and energy circuits, Bosch offers solenoid valves with excellent performance and reliability. They are suitable for a wide range of heating and cooling applications.

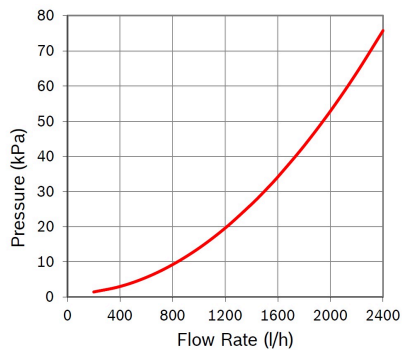
The robust 24-volt switch-off valve SNR 1147412218 with an inlet and outlet arranged one above the other is resistant to dirt and leakage. It is open in the de-energized state and allows 3 million switching cycles.

[Contact us!](#)



Product Specification

Technical data and performance curve



Nominal Voltage (V): 24

Pressure drop (kPa): 35

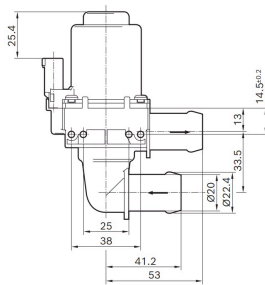
Flow rate (l/h): 1500

Switchable Pressure difference (kPa): 150

Resistance (Ω): 48



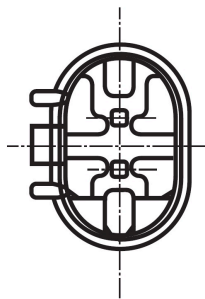
Dimensions



Please contact us if you need a 3d model

[Contact](#)

Connector



Housing:

1-967644-1

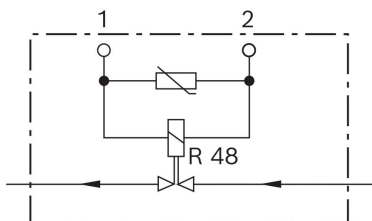
Contact:

5-965906-6

Single wire seal:

0-967067-1

Wiring diagram



Resistance (Ω)

48

Öffnungsrichtung

stromlos geöffnet



Downloads

You may also be interested in:

To Product family: [Catalogue](#)

