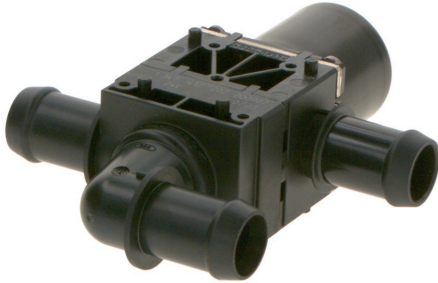


1147412202

Switch-over valve



The high-quality Bosch solenoid valves are suitable for a wide range of applications. For example, they can be used in cooling circuits in hybrid and electric vehicles to increase comfort or optimize performance.

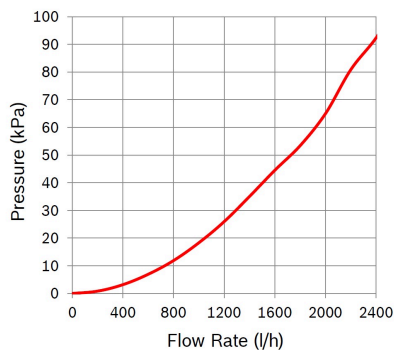
The changeover valve SNR 1147412202 has one inlet and two opposing outlets to switch the coolant flow from one line to another.

[Contact us!](#)



Product Specification

Technical data and performance curve



Nominal Voltage (V): 24

Pressure drop (kPa): 45

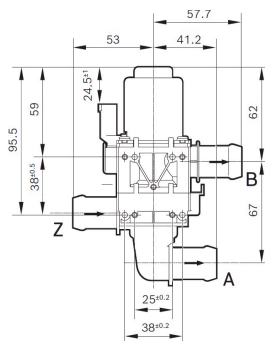
Flow rate (l/h): 1500

Switchable Pressure difference (kPa): 160

Resistance (Ω): 48



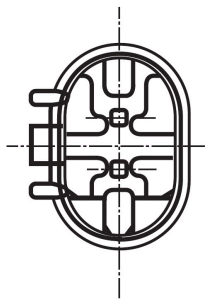
Dimensions



Please contact us if you need a 3d model

[Contact](#)

Connector



Housing:

1-967644-1

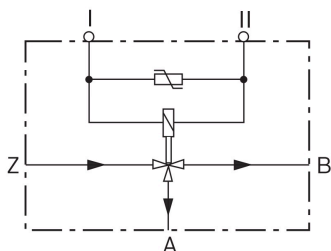
Contact:

5-965906-6

Single wire seal:

0-967067-1

Wiring diagram



Resistance (Ω)

48

Öffnungsrichtung

stromlos geöffnet von Z nach B



Downloads

You may also be interested in:

To Product family: [Catalogue](#)

