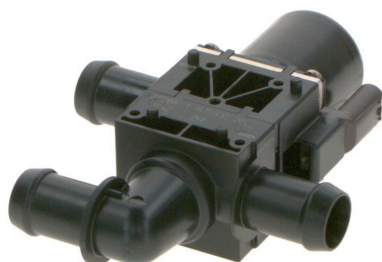


1147412204

# Switch-over valve



Bosch offers a modular portfolio of coolant switching valves with a wide variety of variants and functions for different requirements.

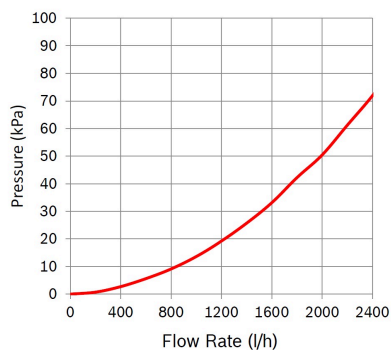
The changeover valve SNR 1147412204 is suitable for commercial vehicles and off-highway applications such as tractors or construction machinery with an on-board voltage system of 24 volts. It can be used for controlling the coolant flow in auxiliary cooling circuits of the powertrain or for the heating circuits of the passenger compartment.

[Contact us!](#)



## Product Specification

### Technical data and performance curve



**Nominal Voltage (V):** 24

**Pressure drop (kPa):** 45

**Flow rate (l/h):** 1500

**Switchable Pressure difference (kPa):** 160

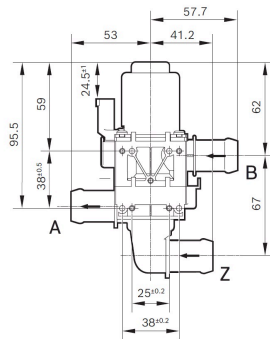
**Resistance ( $\Omega$ ):** 48

Product images and pictures are for demonstration purposes only, the actual product may differ from the picture shown. The quotation drawing is binding.

Robert Bosch GmbH, Auf der Breit 4, 76227 Karlsruhe, Germany [www.bosch-ibusiness.com](http://www.bosch-ibusiness.com)



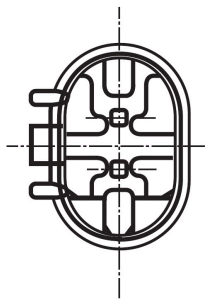
## Dimensions



Please contact us if you need a 3d model

[Contact](#)

## Connector



**Housing:**

1-967644-1

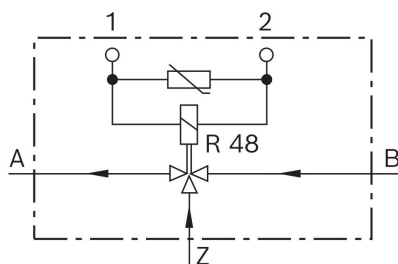
**Contact:**

5-965906-6

**Single wire seal:**

0-967067-1

## Wiring diagram



**Resistance ( $\Omega$ )**

48

**Öffnungsrichtung**

stromlos geöffnet von Z nach A



---

## Downloads

You may also be interested in:

To Product family: [Catalogue](#)

