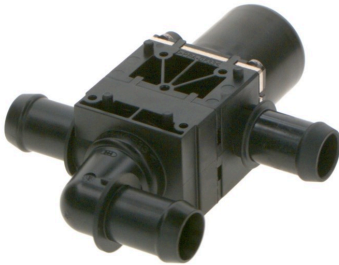


1147412207

# Switch-over valve



Bosch solenoid valves are a reliable component for efficient thermal management. The valves are designed to switch reliably even at high flow rates. They offer tight sealing over the entire service life with over 3 million switching cycles.

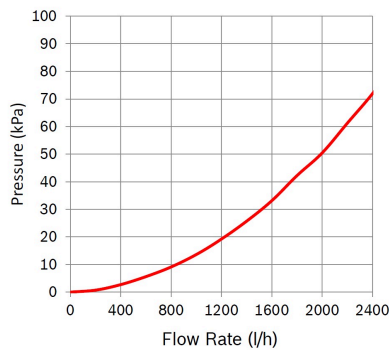
With the 12 Volt switch-over valve SNR 1147412207, two coolant flows can be merged or switched individually.

[Contact us!](#)



## Product Specification

### Technical data and performance curve



**Nominal Voltage (V):** 12

**Pressure drop (kPa):** 45

**Flow rate (l/h):** 1500

**Switchable Pressure difference (kPa):** 160

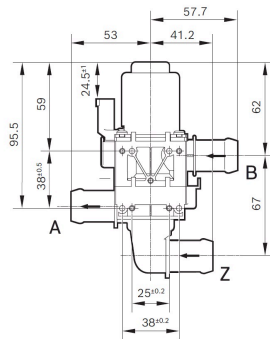
**Resistance ( $\Omega$ ):** 12,4

Product images and pictures are for demonstration purposes only, the actual product may differ from the picture shown. The quotation drawing is binding.

Robert Bosch GmbH, Auf der Breit 4, 76227 Karlsruhe, Germany [www.bosch-ibusiness.com](http://www.bosch-ibusiness.com)



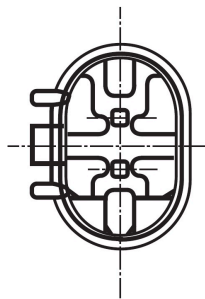
## Dimensions



Please contact us if you need a 3d model

[Contact](#)

## Connector



### Housing:

1-967644-1

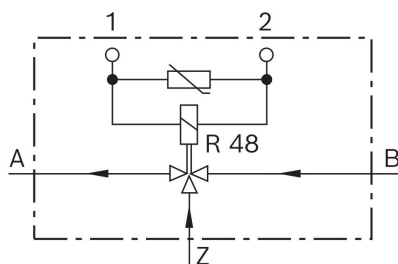
### Contact:

5-965906-6

### Single wire seal:

0-967067-1

## Wiring diagram



### Resistance ( $\Omega$ )

12,4

### Öffnungsrichtung

stromlos geöffnet von Z nach A



---

## Downloads

You may also be interested in:

To Product family: [Catalogue](#)

