

1147412211

# Switch-over valve



Based on decades of experience in heat, fluid and energy management, Bosch solenoid valves ensure efficient coolant flow management. They are made of high-quality materials and withstand even the most demanding conditions.

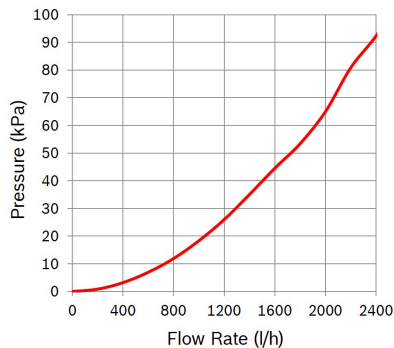
The 12-volt switch-over valve SNR 1147412211 has one inlet and two opposing outlets for switching the coolant flow from one line to another.

[Contact us!](#)



## Product Specification

### Technical data and performance curve



**Nominal Voltage (V):** 12

**Pressure drop (kPa):** 45

**Flow rate (l/h):** 1500

**Switchable Pressure difference (kPa):** 160

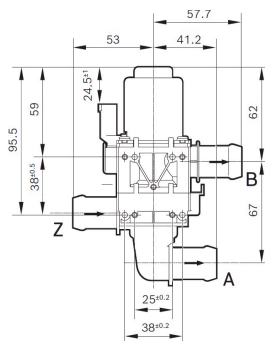
**Resistance ( $\Omega$ ):** 12,4

Product images and pictures are for demonstration purposes only, the actual product may differ from the picture shown. The quotation drawing is binding.

Robert Bosch GmbH, Auf der Breit 4, 76227 Karlsruhe, Germany [www.bosch-ibusiness.com](http://www.bosch-ibusiness.com)



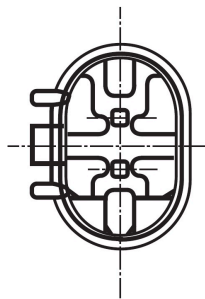
## Dimensions



Please contact us if you need a 3d model

[Contact](#)

## Connector



### Housing:

1-967644-1

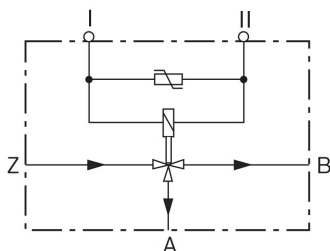
### Contact:

5-965906-6

### Single wire seal:

0-967067-1

## Wiring diagram



### Resistance ( $\Omega$ )

12,4

### Öffnungsrichtung

stromlos geöffnet von Z nach A



---

## Downloads

You may also be interested in:

To Product family: [Catalogue](#)

