

1147412213

Switch-over valve



Bosch switching valves have proven themselves millions of times on the road and are also suitable for various applications outside of the automotive sector. They are a reliable component for the efficient control of coolant flow.

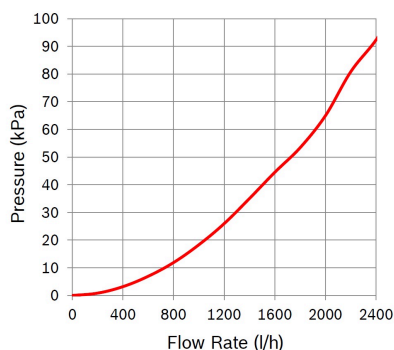
The flow-optimized 12V switch-over valve SNR 1147412213 has one inlet and two outputs arranged one above the other for distributing the coolant to two circuits.

[Contact us!](#)



Product Specification

Technical data and performance curve



Nominal Voltage (V): 12

Pressure drop (kPa): 45

Flow rate (l/h): 1500

Switchable Pressure difference (kPa): 160

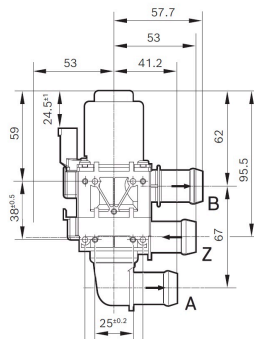
Resistance (Ω): 12,4

Product images and pictures are for demonstration purposes only, the actual product may differ from the picture shown. The quotation drawing is binding.

Robert Bosch GmbH, Auf der Breit 4, 76227 Karlsruhe, Germany www.bosch-ibusiness.com



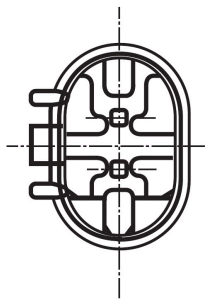
Dimensions



Please contact us if you need a 3d model

[Contact](#)

Connector



Housing:

1-967644-1

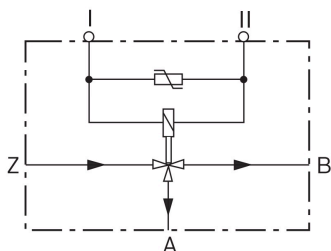
Contact:

5-965906-6

Single wire seal:

0-967067-1

Wiring diagram



Resistance (Ω)

12,4

Öffnungsrichtung

stromlos geöffnet von Z nach B



Downloads

You may also be interested in:

To Product family: [Catalogue](#)

