

1147412282

Switch-over valve



Bosch solenoid valves are suitable for various applications, such as cooling power electronics or battery cells in electric vehicles. Thanks to their compact and robust design, they have a long service life.

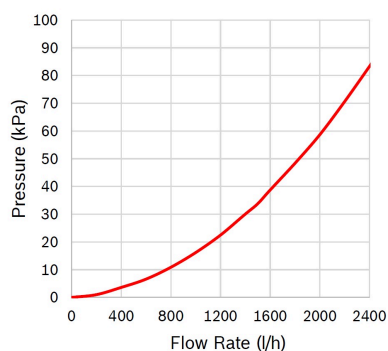
The 12V mini switch-over valve SNR 1147412282 is particularly compact and has one inlet and two outlets.

[Contact us!](#)



Product Specification

Technical data and performance curve



Nominal Voltage (V): 12

Pressure drop (kPa): 35

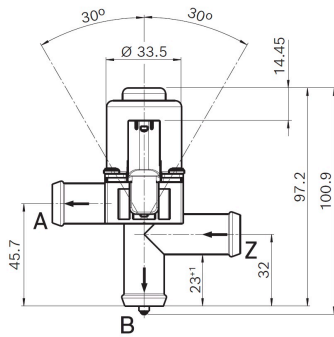
Flow rate (l/h): 1500

Switchable Pressure difference (kPa): 100

Resistance (Ω): 15,3



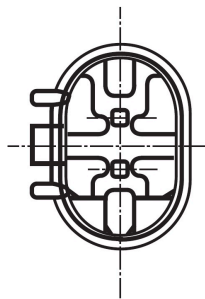
Dimensions



Please contact us if you need a 3d model

[Contact](#)

Connector



Housing:

1-967644-1

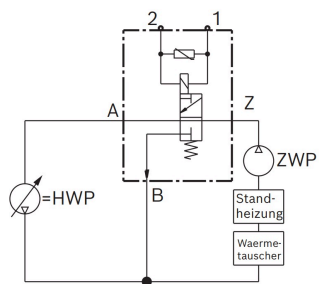
Contact:

5-965906-6

Single wire seal:

0-967067-1

Wiring diagram



Resistance (Ω)

15,3

Öffnungsrichtung

stromlos geöffnet von Z nach A



Downloads

You may also be interested in:

To Product family: [Catalogue](#)

