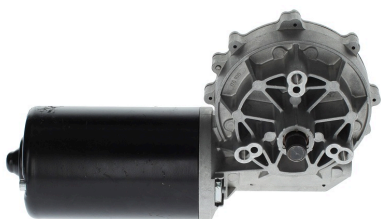


0986337451

EDP Large Electric Motor with Transmission

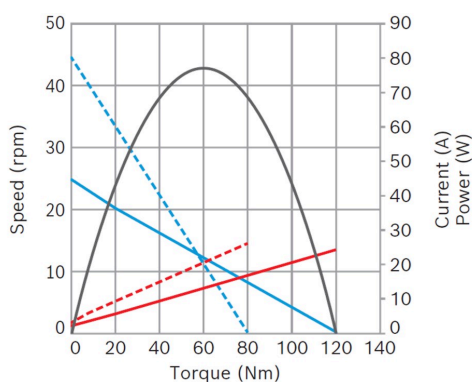


- **Degree of protection:** IP 23
- **Operating mode:** S1
- **Nominal voltage:** 24 V
- **Motor with two speeds**

[Contact us!](#)


Product Specification

Technical data and performance curve



Nominal power (W)*: 19,3 / 33,5

Nominal current (A)*: 3,5 / 6

Nominal speed (rpm)*: 23 / 40

Nominal torque (Nm): 8

Stall torque (Nm)*: 120 / 80

Transmission ratio: 96:2

Rotation direction: counterclockwise

Hall Sensor: No

Transmission position: Left

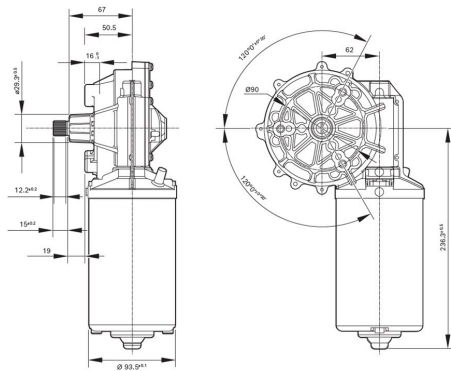
*Motor with two speeds

Product images and pictures are for demonstration purposes only, the actual product may differ from the picture shown. The quotation drawing is binding.

Robert Bosch GmbH, Auf der Breit 4, 76227 Karlsruhe, Germany www.bosch-ibusiness.com



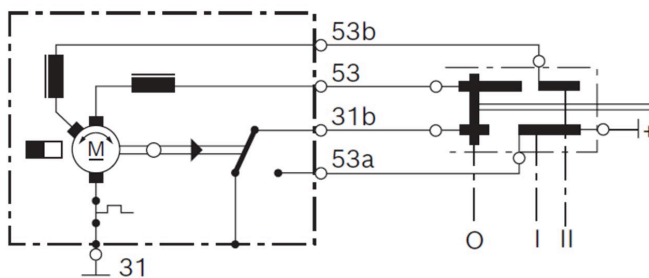
Dimensions



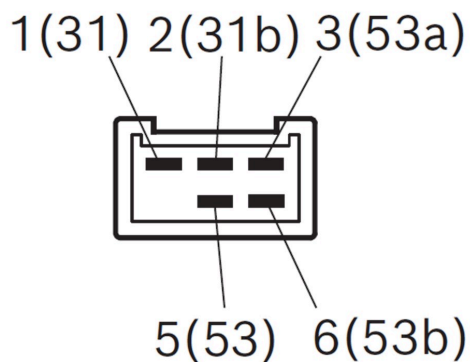
Please contact us if you need a 3d model

[Contact](#)

Circuit diagram



Connector



Housing:

TE 180904-0

Locker:

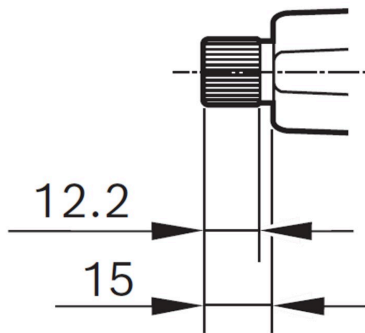
-

PIN:

TE 160927-2 for 1.5 - 2.5 mm² c



Drive interface



Downloads

You may also be interested in:

To Product family: [Catalogue](#)

