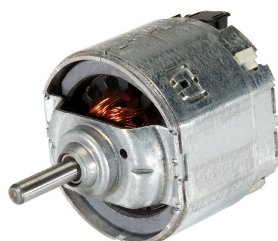


0130115008

GBM-S DC motor



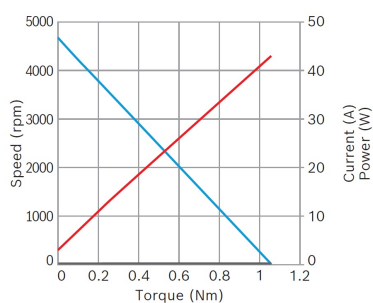
- **Degree of protection:** IP 10
- **Operating mode:** S1
- **Nominal voltage:** 12 V

[Contact us!](#)



Product Specification

Technical data and performance curve



Nominal power (W): 79,5

Nominal current (A): 11

Nominal speed (rpm): 3800

Nominal torque (Nm): 0,2

Stall torque (Nm): 1,05

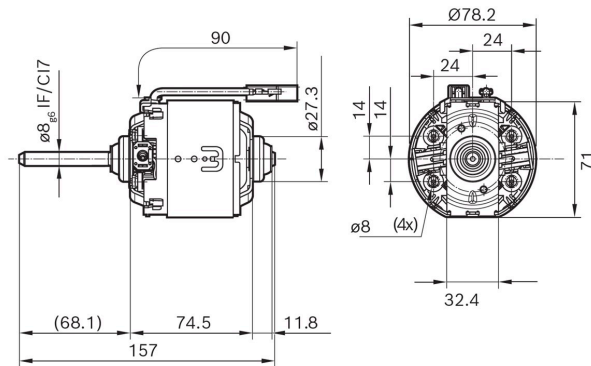
Hall Sensor: No

Product images and pictures are for demonstration purposes only, the actual product may differ from the picture shown. The quotation drawing is binding.

Robert Bosch GmbH, Auf der Breit 4, 76227 Karlsruhe, Germany www.bosch-ibusiness.com



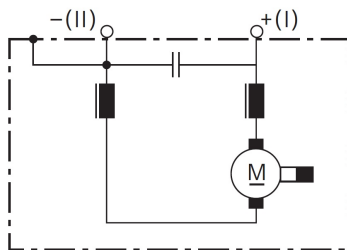
Dimensions



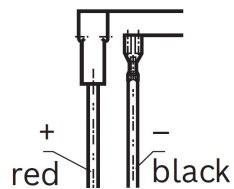
Please contact us if you need a 3d model

[Contact](#)

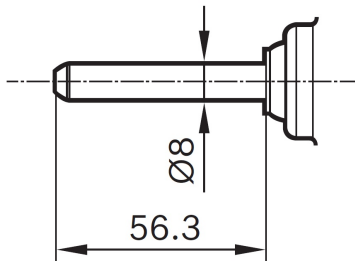
Circuit diagram



Connector



Drive interface



Downloads

You may also be interested in:

To Product family: [Catalogue](#)

