

0130115352

GBM-L DC motor



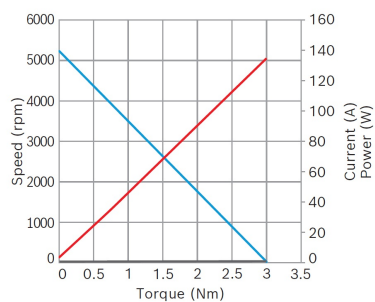
- **Degree of protection:** IP 10
- **Operating mode:** S1
- **Nominal voltage:** 12 V

[Contact us!](#)



Product Specification

Technical data and performance curve



Specifications

Nominal power (W): 247,5

Nominal current (A): 26

Nominal speed (rpm): 4300

Nominal torque (Nm): 0,55

Stall torque (Nm): 3

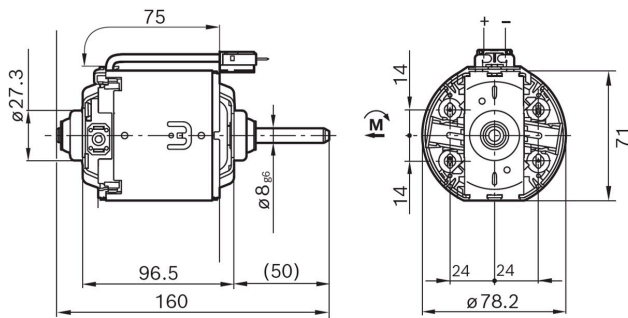
Hall Sensor: No

Product images and pictures are for demonstration purposes only, the actual product may differ from the picture shown. The quotation drawing is binding.

Robert Bosch GmbH, Auf der Breit 4, 76227 Karlsruhe, Germany www.bosch-ibusiness.com



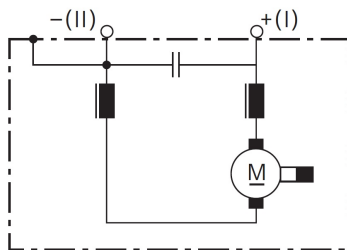
Dimensions



Please contact us if you need a 3d model

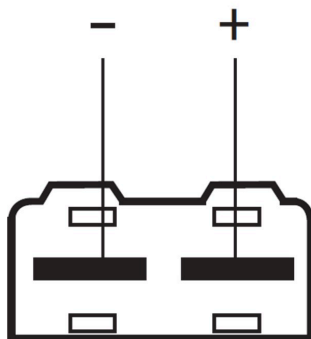
[Contact](#)

Circuit diagram



Specifications

Connector

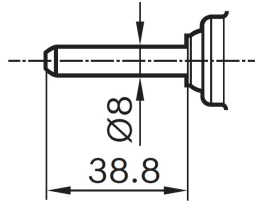


Specifications



Drive interface

Specifications



Downloads

You may also be interested in:

To Product family: [Catalogue](#)

