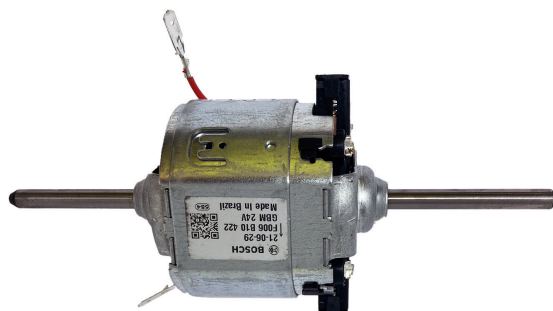


F006B10499

# GBM-S DC motor with double shaft



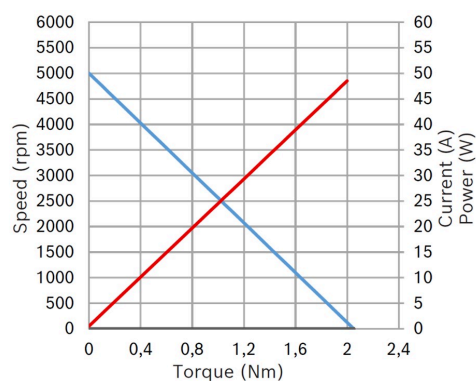
- **Degree of protection:** IP 10
- **Operating mode:** S1
- **Nominal voltage:** 24 V

[Contact us!](#)



## Additional information

### Technical data and performance curve



**Nominal power (W):** 300

**Nominal current (A):** 9,5

**Nominal speed (rpm):** 4500

**Nominal torque (Nm):** 0,33

**Stall torque (Nm):** 2

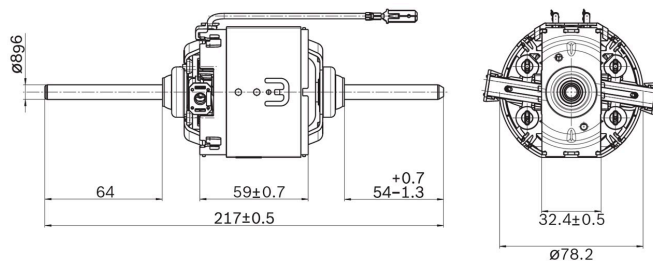
**Hall Sensor:** No

Product images and pictures are for demonstration purposes only, the actual product may differ from the picture shown. The quotation drawing is binding.

**Robert Bosch GmbH**, Auf der Breit 4, 76227 Karlsruhe, Germany [www.bosch-ibusiness.com](http://www.bosch-ibusiness.com)



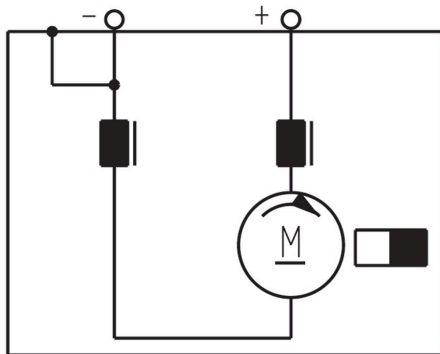
## Dimensions



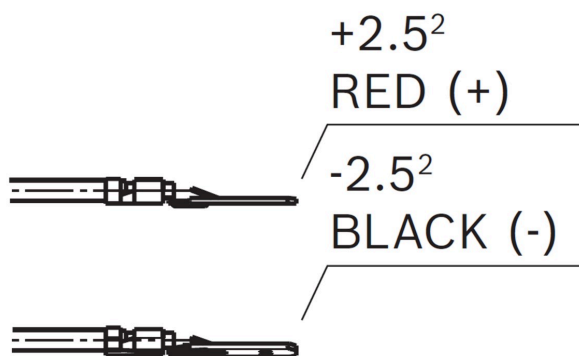
Please contact us if you need a 3d model

[Contact](#)

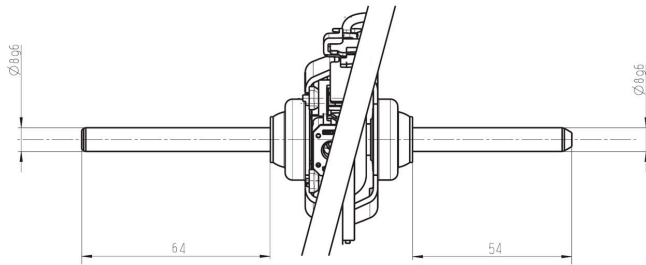
## Circuit diagram



## Connector



## Drive interface



## Downloads

You may also be interested in:

To Product family: [Catalogue](#)

