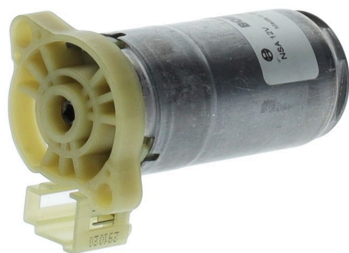


0390204092

# NSA with hollow shaft on both sides

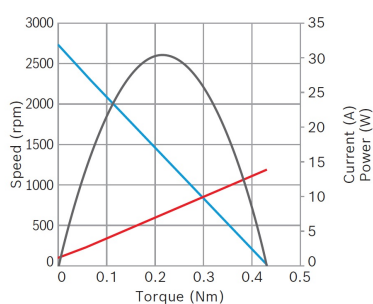


- **Degree of protection:** IP 50
- **Operating mode:** S3
- **Rotation direction:** Left and right rotation
- **Nominal voltage:** 12 V

[Contact us!](#)


## Product Specification

### Technical data and performance curve



**Nominal power (W):** 12,6

**Nominal current (A):** 2,5

**Nominal speed (rpm):** 2400

**Nominal torque (Nm):** 0,05

**Stall torque (Nm):** 0,43

**Hall Sensor:** Yes

Product images and pictures are for demonstration purposes only, the actual product may differ from the picture shown. The quotation drawing is binding.

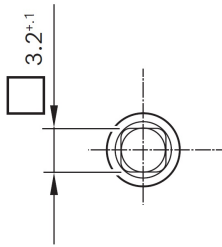
Robert Bosch GmbH, Auf der Breit 4, 76227 Karlsruhe, Germany [www.bosch-ibusiness.com](http://www.bosch-ibusiness.com)





---

## Drive interface



---

## Downloads

You may also be interested in:

To Product family: [Catalogue](#)

