

0132801141

VMC Electric Actuator



The Bosch VMC electric actuator 0132801141 is characterized by its immediate provision of torque at low speed, while requiring very little installation space.

This makes it the perfect choice for precise adjustment and control of air distribution, mixing and recirculation flaps, as well as for actuating switching and proportional valves. The integrated potentiometer can be used for position feedback.

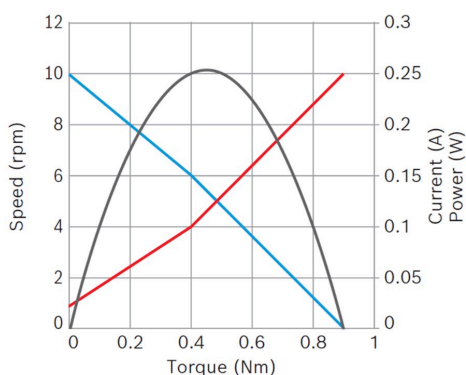
- **Operating mode:** S2
- **Rotation direction:** Left and right rotation
- **Nominal voltage:** 24 V

[Contact us!](#)



Product Specification

Technical data and performance curve



Nominal power (W): 0,3

Nominal current (A): 0,10

Nominal speed (rpm): 6

Nominal torque (Nm): 0,4

Stall torque (Nm): 0,9

Transmission ratio: 405:1

Degree of protection: IP 54

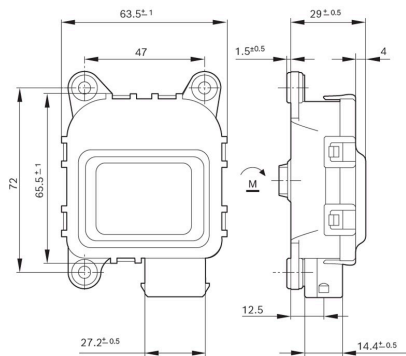
Signal potentiometer: Yes

Product images and pictures are for demonstration purposes only, the actual product may differ from the picture shown. The quotation drawing is binding.

Robert Bosch GmbH, Auf der Breit 4, 76227 Karlsruhe, Germany www.bosch-ibusiness.com



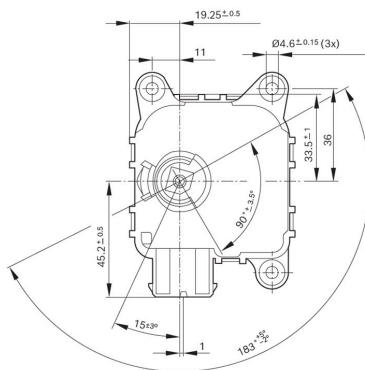
Dimensions



Please contact us if you need a 3d model

[Contact](#)

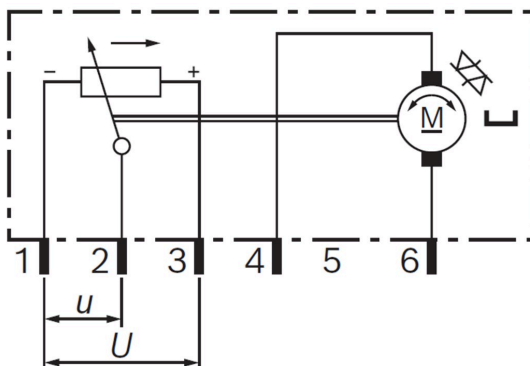
Dimensions



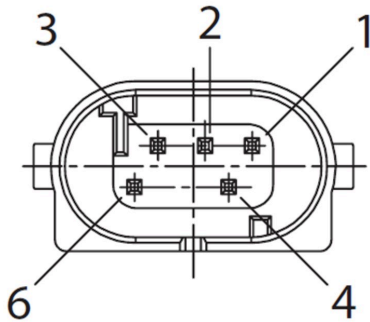
Please contact us if you need a 3d model

[Contact](#)

Circuit diagram



Connector



Housing:

RB-1 928 403 095

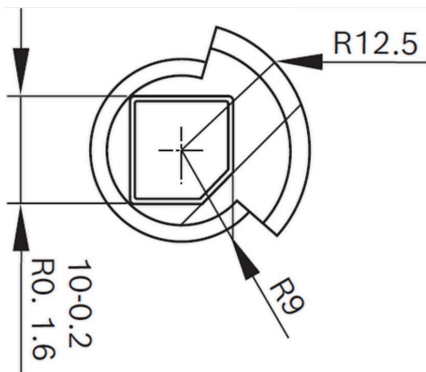
Locker:

-

PIN:

928999-1

Drive interface



Application examples

- For ventilation in residential buildings, offices, hotels
- Ventilation systems in logistics
- As an air damper actuator for cabin air conditioning on ships
- HVAC applications in off-highway vehicles such as agricultural and forestry machinery
- As an actuator of a proportional valve, e.g. for construction, agricultural or logistics machinery
- Motorhomes, buses, vans

Downloads

You may also be interested in:

To Product family: [Catalogue](#)

