

0132801156

VMC Electric Actuator



The Bosch VMC electric actuator 0132801156 offers a wide range of applications in the field of HVAC, building and automation technology.

Robustness, durability, precise adjustment and universal interface/connection points are features that characterize the VMC compact actuator. The non-reversible actuator makes it possible to maintain the position even in the de-energized state, making it the ideal choice for industrial applications.

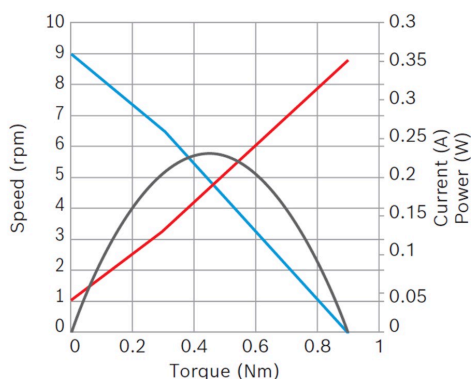
- **Operating mode:** S2
- **Rotation direction:** Left and right rotation
- **Nominal voltage:** 12 V

[Contact us!](#)



Product Specification

Technical data and performance curve



Nominal power (W): 0,2

Nominal current (A): 0,13

Nominal speed (rpm): 6,5

Nominal torque (Nm): 0,3

Stall torque (Nm): 0,9

Transmission ratio: 310:1

Degree of protection: IP 40

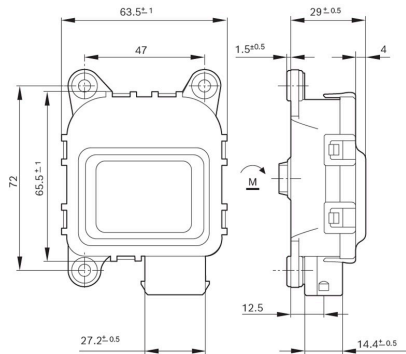
Signal potentiometer: No

Product images and pictures are for demonstration purposes only, the actual product may differ from the picture shown. The quotation drawing is binding.

Robert Bosch GmbH, Auf der Breit 4, 76227 Karlsruhe, Germany www.bosch-ibusiness.com



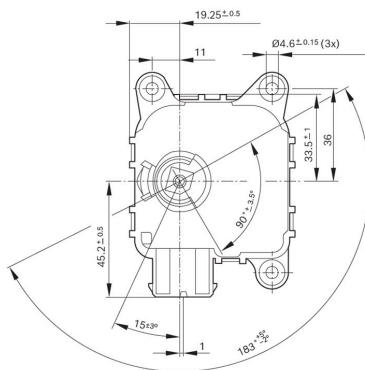
Dimensions



Please contact us if you need a 3d model

[Contact](#)

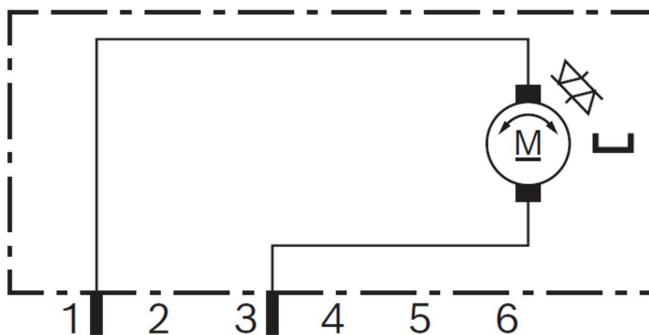
Dimensions



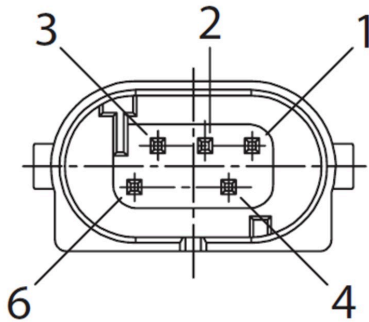
Please contact us if you need a 3d model

[Contact](#)

Circuit diagram



Connector



Housing:

RB-1 928 403 095

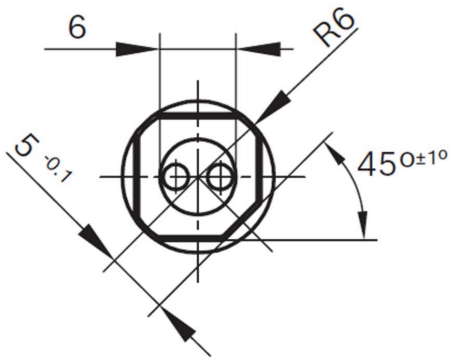
Locker:

-

PIN:

928999-1

Drive interface



Application examples

- Dosing systems and other industrial processes
- Packaging machines
- Building automation
- Ventilation, air conditioning, heating

Downloads

You may also be interested in:

To Product family: [Catalogue](#)

