

0132801169

VMC Electric Actuator



Compared to stepper motors, the Bosch VMC electric actuator 0132801169 offers significant advantages. The starting torque is immediately available, so there is no delay when starting. Unlike stepper motors, the electric actuator does not have to be reset to the starting position every time it starts, which avoids disturbing noises, saves time and increases efficiency.

In addition, it is easier to connect and control, as the electronics effort for the control unit is lower. The reduced effort reduces complexity, which can save costs in the short and long term.

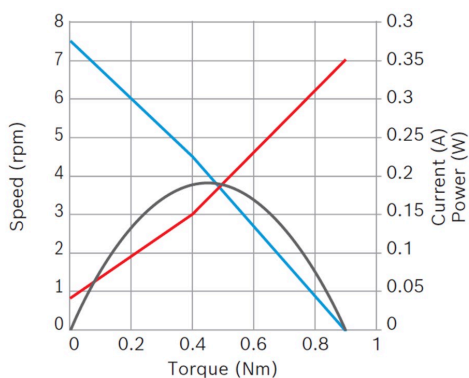


- **Operating mode:** S2
- **Rotation direction:** Left and right rotation
- **Nominal voltage:** 12 V

[Contact us!](#)

Product Specification

Technical data and performance curve



Nominal power (W): 0,2

Nominal current (A): 0,15

Nominal speed (rpm): 4,5

Nominal torque (Nm): 0,4

Stall torque (Nm): 0,9

Transmission ratio: 405:1

Degree of protection: IP 40

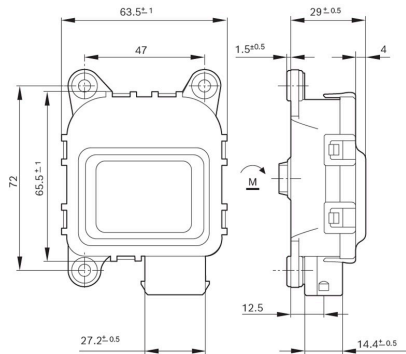
Signal potentiometer: Yes

Product images and pictures are for demonstration purposes only, the actual product may differ from the picture shown. The quotation drawing is binding.

Robert Bosch GmbH, Auf der Breit 4, 76227 Karlsruhe, Germany www.bosch-ibusiness.com



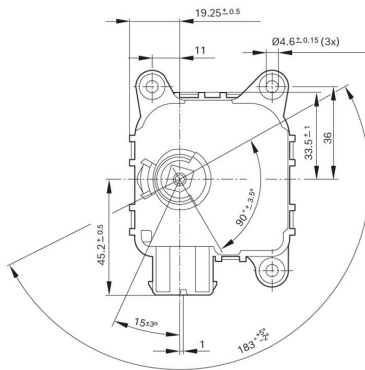
Dimensions



Please contact us if you need a 3d model

[Contact](#)

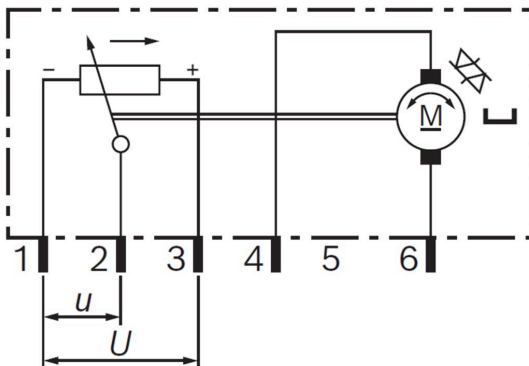
Dimensions



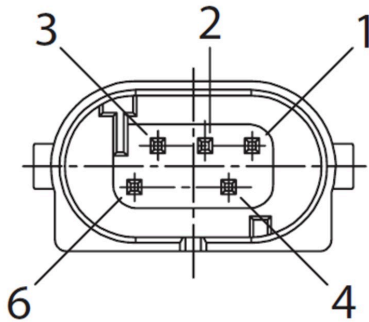
Please contact us if you need a 3d model

[Contact](#)

Circuit diagram



Connector



Housing:

RB-1 928 403 095

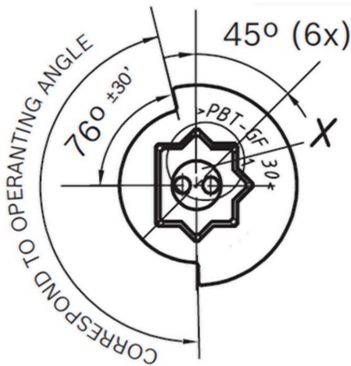
Locker:

-

PIN:

928999-1

Drive interface



Application examples

- In the automotive industry
- In off-highway vehicles, e.g. for retrofitting air conditioning units for light commercial vehicles and agricultural machinery
- In medical technology
- In ventilation systems of container ships
- In house ventilation systems and building technology
- Cooling systems for public transport
- In areas where precise adjustment and positioning is required



Downloads

You may also be interested in:

To Product family: [Catalogue](#)

