

039024910A

WDD2 Direct wiper drive



Versatile and Reliable - The Bosch WDD2

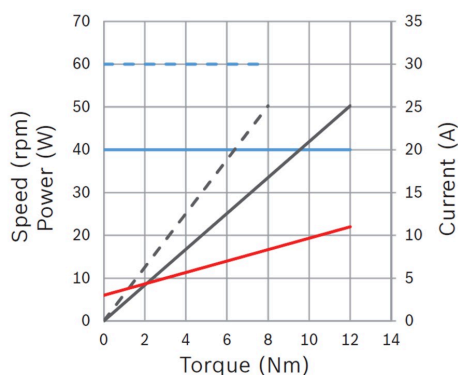
Customizable wiping speed, angle, and torque make it applicable to various systems, while its interface options provide a versatile wiping solution for different applications. Experience crystal-clear visibility in various weather conditions, reduced maintenance, and exceptional wiping effectiveness with the Bosch WDD2, all with low operating noise level. Rely on the robust design and adaptability of the WDD2 for a reliable and efficient wiping solution.

- **Degree of protection:** IP 6K7
- **Wiping angle:** Up to 350°
- **LIN/CAN (2.0) / analog communication**
- **Nominal voltage:** Compatible for 12 V und 24 V
- **Adjustable speed, angle and torque**

[Contact us!](#)

Product Specification

Technical data and performance curve



Nominal power (W): 50

Nominal current (A): 8,3

Nominal speed (rpm): 60 / 40

Nominal torque (Nm): 8 / 12

Stall torque (Nm): 34

Transmission ratio: 76:1

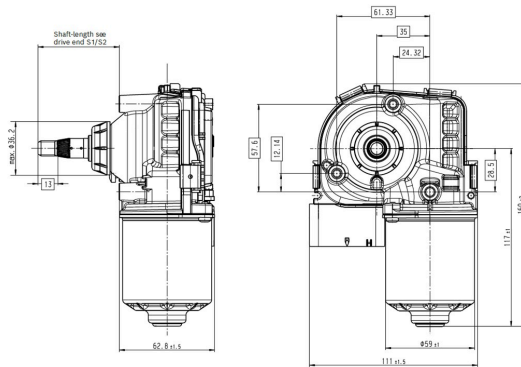
Signal-LIN: LIN/CAN

Product images and pictures are for demonstration purposes only, the actual product may differ from the picture shown. The quotation drawing is binding.

Robert Bosch GmbH, Auf der Breit 4, 76227 Karlsruhe, Germany www.bosch-ibusiness.com



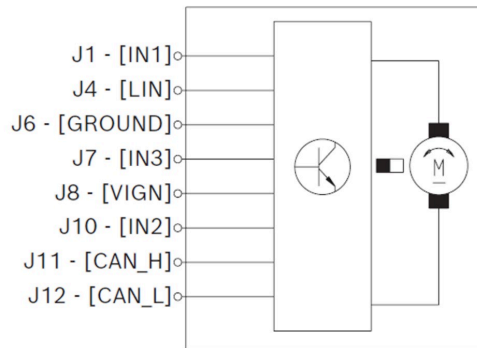
Dimensions



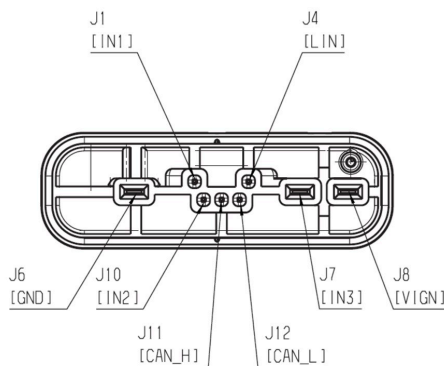
Please contact us if you need a 3d model

[Contact](#)

Circuit diagram



Connector



Housing:

MOLEX

variant 31034-5016

Locker:

-

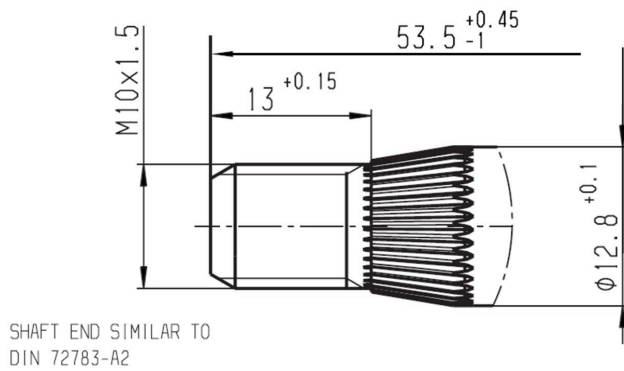
PIN:

1393367-1,

1326032-6,



Drive interface



Application examples

As a wiper motor for ...

- construction machines like excavators, bulldozers, graders or front loaders
- railway applications like locomotives and trains

Downloads

You may also be interested in:

To Product family: [Catalogue](#)

